

TRI-STATE LEARNING COLLABORATIVE ON AGING

---

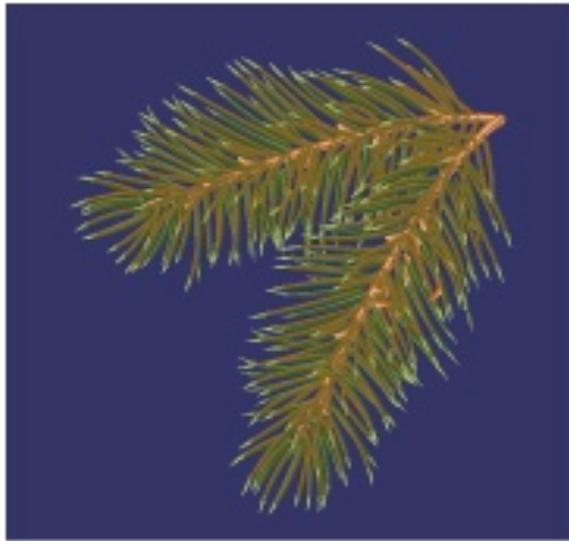
Welcome to  
Today's Webinar

# Driving Community Home: An Extension 2 Assessment Scenarios

---

# Tri-State Learning Collaborative on Aging

Our mission: Increasing the collective impact of aging in place initiatives through shared learning in New Hampshire, Maine & Vermont



# Thank you to our Funders!



THE BINGHAM PROGRAM

MEHAF

MAINE HEALTH ACCESS FOUNDATION

 ENDOWMENT  
*for Health*

JOHN T. GORMAN  
FOUNDATION

Maine   
Community Foundation



NEW HAMPSHIRE  
CHARITABLE FOUNDATION



THE  
Vermont  
Community Foundation



TRI-STATE  
LEARNING  
COLLABORATIVE  
ON AGING

[www.agefriendly.community](http://www.agefriendly.community)

# Webinar Housekeeping

## Speaking During Call

You are all unmuted. If you want to mute yourself, click the microphone.

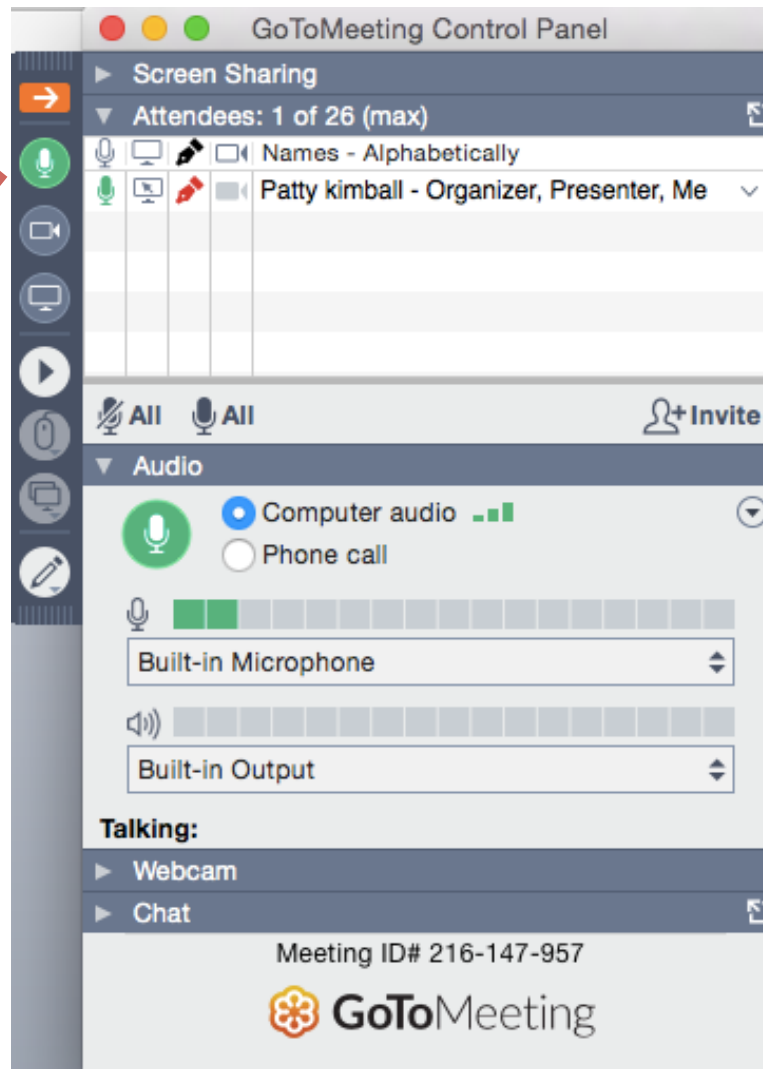


## Audio issues?

Try calling in using your telephone!

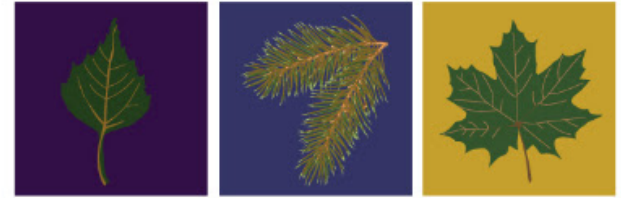


Send **questions or comments** by typing them in here (Chat)



## Attendees

You can see everyone on the call



TRI-STATE LEARNING COLLABORATIVE ON AGING

---

Today's Webinar

# Driving Community Home: An Extension 2 *Assessment Scenarios*

---

## Scenario: Survey

---

### Survey

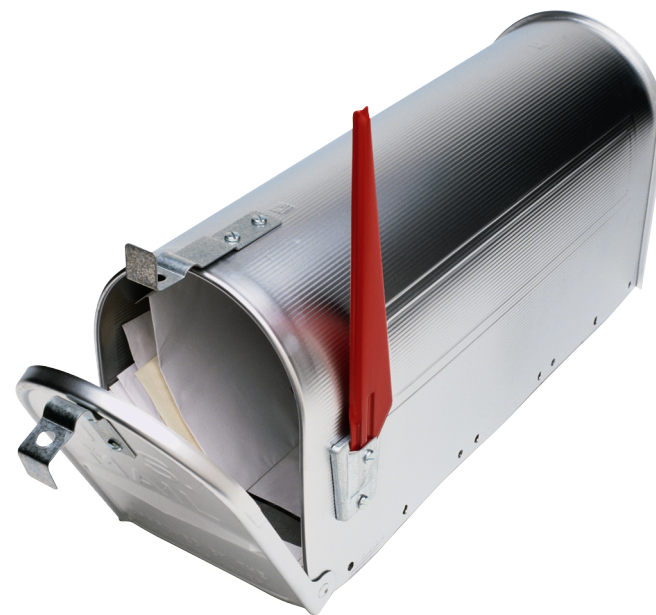
You are doing a survey. You have no money to mail the survey, but your town is willing to make as many copies of the survey that you need. The town is also willing to collect the survey and have physical copies available at the town office. Not everyone uses computers or internet. You want to hear from as many people as possible.

### Your Challenge

How do you get the survey out?

Who are your partners?

What's your communication strategy?



# Scenario: Community Meetings

---

## Community Forum As Assessment and/or After Assessment

You've got an active community group ready to find out what's needed in your community to support people living in the community as they age.

You've completed an assessment and have discovered the core challenges facing older folks in your community generally. You want to hold a community conversation to dive deeper into your findings to discover what sorts of supports folks are already using/aware of and what kinds of services folks would use and how/why.

### To Consider:

- What are your general areas of inquiry?
- How do you get the word out?
- Who runs the forum? How long is it? What time of day? Venue? Room set up?
- How do you get people there? Offer rides? Incentives?
- How do you ensure all voices are heard?
- How do you capture the outcomes and share them back with the larger community?
- Is one enough given the make-up of your community?



# Thank You for joining us!

- Slides & evaluation will be sent out later today.
- Recorded webinar will available within 24 hours.



[www.agefriendly.community](http://www.agefriendly.community)  
[patriciafkimball@gmail.com](mailto:patriciafkimball@gmail.com)

